

---

CITY OF KELOWNA

---

MEMORANDUM

---

**Date:** December 11, 2007  
**File No.:**  
**To:** City Manager  
**From:** Parks Manager  
**Subject:** Gillard Crown Lands south of the City Limits

Report Prepared by: *B. Davidson*

---

**RECOMMENDATION:**

THAT Mayor Shepherd be authorized to send a letter to the Premier of British Columbia requesting that the Province consult with the City if it is considering any changes in the crown land status of the Gillard area.

**BACKGROUND:**

Through recently conducted research on the Mountain Bike Community Profile the Parks Division has learned that the mountain biking community, including youth, regularly recreate on the crown lands south of the city, between the municipal boundary and the Kettle Valley Railway, and between Myra-Bellevue Provincial Park and Okanagan Mountain Provincial Park.

In the late 1990's a group of trail builders started constructing trails dedicated to a new form of mountain biking now known as free riding.

Many young local riders have had their first mountain biking experiences on the technical slopes of Gillard. Steve Romaniuk, Ryan Schnepf and Nathan Kemila have become well known locals in the international free ride scene.

Since the initial successes of this trio, major mountain bike film companies have featured the progressive trails of Gillard in their movies. Film companies have brought professional riders to film at Gillard and their movies have provided international exposure.

Mountain biking tourists and professional tour groups have frequented the area ever since. It is common place to meet riders in Gillard from as far away as California, Europe and eastern Canada. Kelowna, like Kamloops and Vancouver, is considered a must visit stop on everyone's British Columbia (BC) mountain bike trips. BC is considered the birthplace and epicentre of the free ride mountain biking movement.



The fire of 2003, burnt to the ground many of the best, most technical trails, but it didn't take long for new trails to rise from the ashes. Since then, the area has transformed from a 'black diamond' level network to a well rounded network, catering to free riders of all levels. This transformation has made Gillard an even more appealing place for youth, parents, entire families and middle to older aged riders to recreate.

The Gillard area now consists of fifteen very well built trails that are regularly maintained and upgraded by dedicated local trail builders (see attached map.) This area continues to attract more and more visitors each year, adding to Kelowna's already great reputation as a sport enthusiast's destination of choice.

The City of Kelowna and Regional District of the Central Okanagan have partnered to develop a regional mountain bike strategy; BC Parks has been actively involved. Once the mountain bike strategy is complete, in 2008, there may be other areas we wish to bring to the province's attention.

Therefore, as a precaution, we ask that City Council approve the sending of this letter to advise the Province of our community interest and our desire to be involved in dialogue.

Considerations that were not applicable to this report:

**INTERNAL CIRCULATION TO:**  
**LEGAL/STATUTORY AUTHORITY:**  
**LEGAL/STATUTORY PROCEDURAL REQUIREMENTS:**  
**EXISTING POLICY:**  
**FINANCIAL/BUDGETARY CONSIDERATIONS:**  
**PERSONNEL IMPLICATIONS:**  
**TECHNICAL REQUIREMENTS:**  
**EXTERNAL AGENCY/PUBLIC COMMENTS:**  
**COMMUNICATIONS CONSIDERATIONS:**  
**ALTERNATE RECOMMENDATION:**

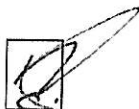
Submitted by:

*B. Davidson*

---

B. Davidson, Parks Planner

Approved for Inclusion:



Cc: Mike Kittmer – Active Transportation Coordinator  
Gary Stephen – Long Range Planner

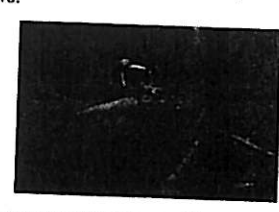
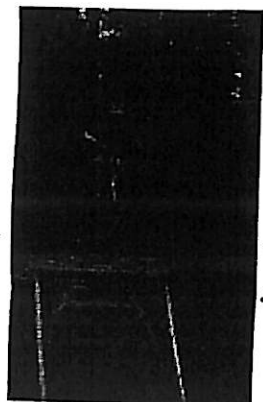
# "Gillard"

## About the Trails...

Kelowna's home of free-riding. Lots of hauled-in lumber stunts with new stunts and trails added every year. The Kelowna Fire of 2003 hit this area pretty hard but lots of work has been done to re-build the trails and add new ones. Wear pads and expect the trails to be steep, technical and littered with skinnies, drops and gap jumps. This is definitely not the place to take beginners.

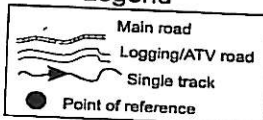
## Getting There...

Head down Lakeshore Dr. to Chute Lake Rd.. Head up Chute Lake Rd. past Summerhill Winery and Chute Lake Cr. until you come to a 90 degree right bend in the road. At the bend, take the left up Gillard Rd and look for the infamous "Gillard Gap Jump" over the pavement between the first and second switchbacks. The road turns to gravel and takes a sharp left bend at the entrance to the gravel pit. Follow the road up to the parking area marked on the map and either ride or shuttle up to the trails.



15. **Kerplow.** The original pre-fire trail originating from the Kettle Valley rail bed. Steeps, gap jumps, drops and skinnies.
14. **Kettle Valley Rail Bed.** This is the top of the Gillard Trail System. Park here and head down Kerplow or Cat's Ass.
13. **Cat's Ass.** Drops, gap jumps and log rides. All have ride arounds.
12. **Snake's Back, AKA 'Ken's Trail'.** Some fun stunts and drops that connect directly to Squaw's Hollow. Similar in difficulty to Squaw's Hollow.
11. **Squaw's Hollow.** Starts at the 7 km bypass. A fun intermediate trail with wide stunts and short gap jumps. Connect to Wobbly Pops for a great introduction to the Gillard trails.
10. **Dr. No.** One of the original trails in Gillard built along the edge of Rembler Creek canyon. No stunts but some scary cliff exposure and steep chutes. The only trail untouched by fire.
9. **Fists First.** Some good launches and log rides. Similar in style to Cats Ass.
8. **Hucking Grasshole.** Destroyed by the fire, this trail has been rebuilt and will be used for a New World Disorder film shoot. Lots of stunts, skinnies and jumps.
7. **Lick-Her-Sore.** A man-made skinny-fest with some big drops off the stunts.
6. **Green Pooh AKA Lower Kerplow.** Around the 6 km mark. A couple of short trails with drops, stunts and skinnies to connect to Boss Hog & Wobbly Pops.
5. **Squaw's Hollow crosses Gillard road here.**
4. **Wobbly Pops.** This is the post-fire re-incarnation of Honey Rider. Easier than Boss Hog with some jumps and simple stunts.
3. **Boss Hog.** Also a pre-fire trail with some big drops, stunts, gaps and a steep rock wall and a large wooden step-up jump.
2. **Dirty Sanchez.** This is pre-fire trail with a couple of natural launches but no man-made stunts re-built yet. It comes out on Gillard road just below the parking area.
1. **End of trail Parking.** It's a fairly obvious pull-out around the 3.5 km mark on the road. Start pedalling up Gillard Rd. here or if you're shuttling to the trails, park one of your vehicles here.

## Legend



**Warning:**  
Mountain Biking is an inherently dangerous activity and accidents can often occur several kilometers from the nearest help. Please exercise caution and control at all times when riding trails. Know your personal limits, most stunts and obstacles on the trails have easily accessed by-passes. Always wear a helmet and preferably body armor) and ride with a friend or two, it's more fun anyway. The producers of this map assume no responsibility or liability whatsoever in the event of an accident, injury, or action brought against anyone travelling any of the routes described on this map.

The Honourable Gordon Campbell  
PO Box 9041  
STN PROV GOVT  
Victoria BC  
V8W 9E1

November 27, 2007

Dear Premier Campbell:

On behalf of my Council colleagues and the citizens of Kelowna I would like to draw your attention to Gillard, an area just outside Kelowna city limits.

The City of Kelowna and Regional District of the Central Okanagan have partnered to develop a regional mountain bike strategy; BC Parks has been actively involved. Through our preliminary research we have learned that Gillard is a world renowned mountain biking area. The majority of the mountain biking area is located on crown land located below the Kettle Valley Railroad and between Myra-Bellevue and Okanagan Mountain Parks. Mountain bikers from around the world visit this area to freeride steep technical fall lines which meander through cliff lines, rock faces and through tightly treed areas.

Trails were first developed in this area by local riders in the late 1990s. The area was destroyed in the 2003 Okanagan Mountain Park fire, but has since been rebuilt by tireless and passionate mountain bikers in the Kelowna area. Today the area boasts 15 trails that are suitable for both intermediate and advanced riders.

Gillard has produced three well known riders from the Kelowna area and captured the attention of several filmmakers; this in turn has introduced what was once a relatively well kept local secret to the world. As a result it is not unusual to find people from as far away as Europe seeking thrills in Gillard.

The City would like to be involved in any discussions that may change the current status of this crown land. British Columbia is considered to be the birthplace of the freeride mountain bike movement thanks to riding areas such as the North Shore and Gillard. The provincial government, in conjunction with several regional and local governments, has worked hard to promote active living and mountain biking tourism. We have a world class venue operated and maintained by volunteers that encourages riders from near and far to ride – we would like to ensure our community interests and recreation needs continue to be addressed. Once the mountain bike strategy is complete there may be other areas we will bring to the provinces attention; however we felt it was important to bring this unique area to your attention sooner than later.

I have enclosed a map of the trail network to illustrate the exhaustive network of trails. I hope you agree this is a unique and important area to Kelowna and British Columbia which needs community discussion if its current status is considered for change.

Yours truly,

Sharon Shepherd  
Mayor